



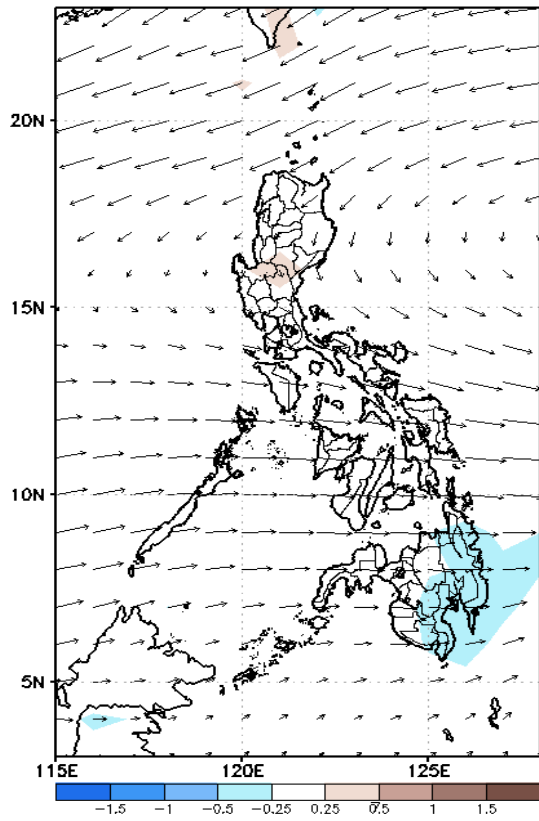
Week 1 & Week 2 Forecast for the Philippines using GEFS Model



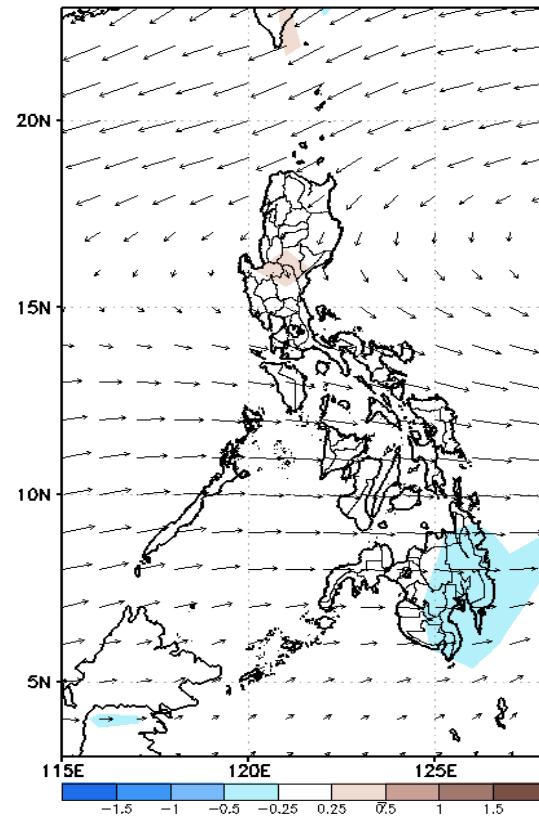
GEFS Week-1 Forecasts: Wind Anomaly Forecast

Week 1: Sep 21-27, 2022

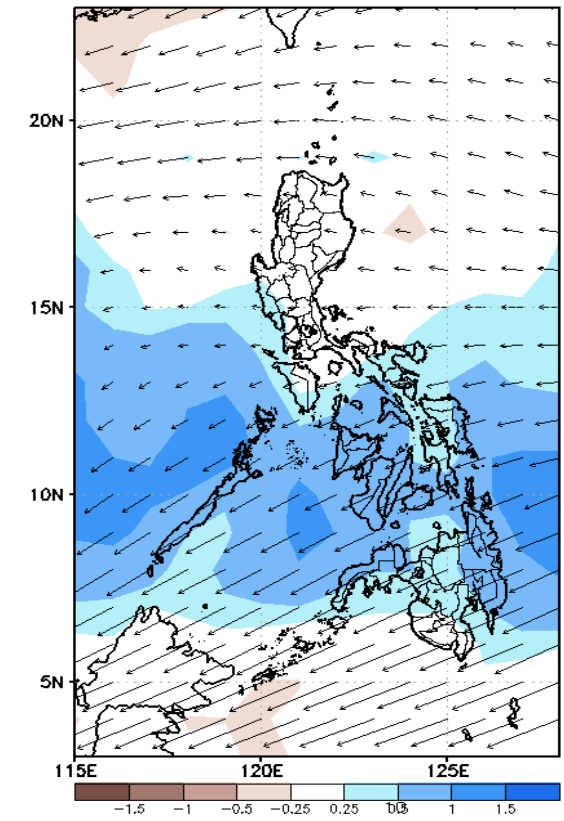
GEFS Week-1 850-hPa Divergence and Wind Anomaly
Valid: 20220921 - 20220927



GEFS Week-1 700-hPa Divergence and Wind Anomaly
Valid: 20220921 - 20220927



GEFS Week-1 200-hPa Divergence and Wind Anomaly
Valid: 20220921 - 20220927

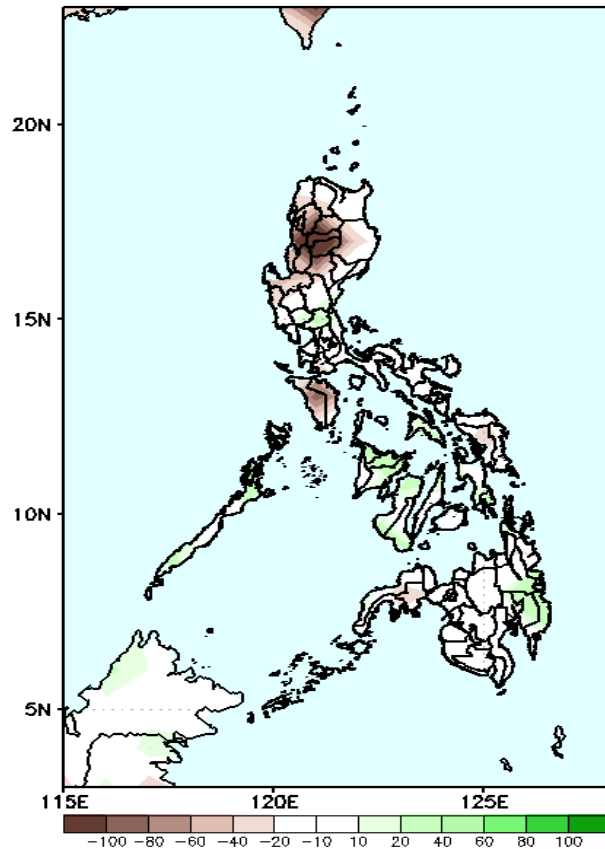


Northeasterly windflow affecting some areas in Northern Luzon while Southwest Monsoon affecting most areas in the country during the forecast period.

Precipitation Anomaly and Exceedance Probability > 25/50 mm

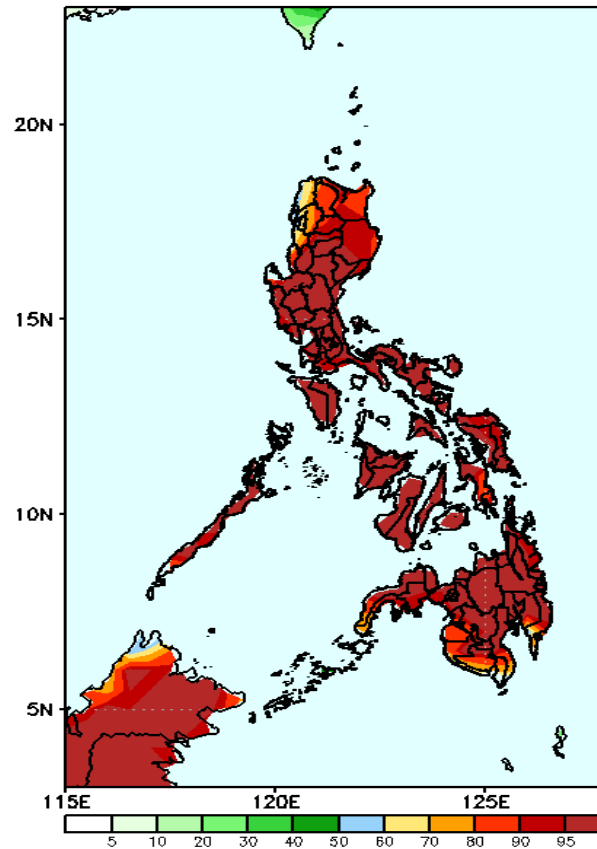
Week 1: Sep 21-27, 2022

GEFS Week-1 Precip Anomaly
Valid: 20220921 - 20220927



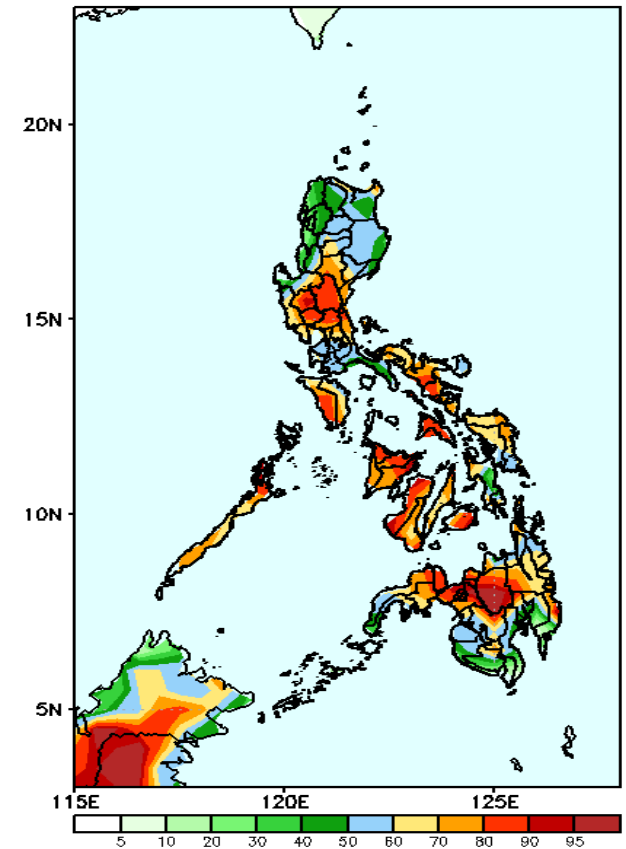
Average to about 20mm rainfall deficit is expected in most parts of the country except Palawan, Western Visayas and Davao Region where 20-40mm increase in rainfall is expected during the forecast period.

GEFS Week-1 Exceedance Prob. > 25mm
Valid: 20220921 - 20220927



High probability of rainfall to exceed 25mm in most parts of the country during the forecast period.

GEFS Week-1 Exceedance Prob. > 50mm
Valid: 20220921 - 20220927



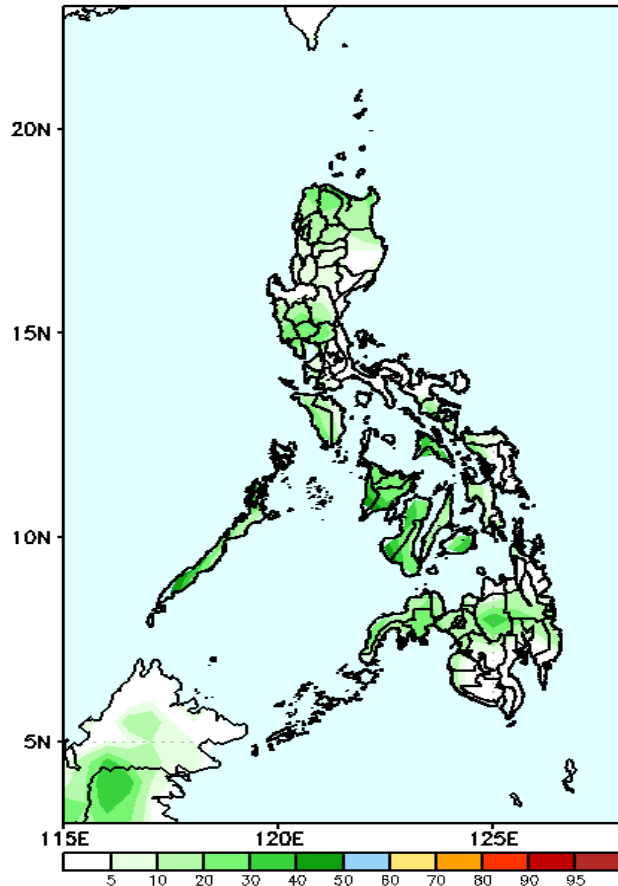
High probability of rainfall to exceed 50mm in most parts of the country except some parts of Northern Luzon, Southern Leyte during the forecast period.



Exceedance Probability > 100/150/200 mm

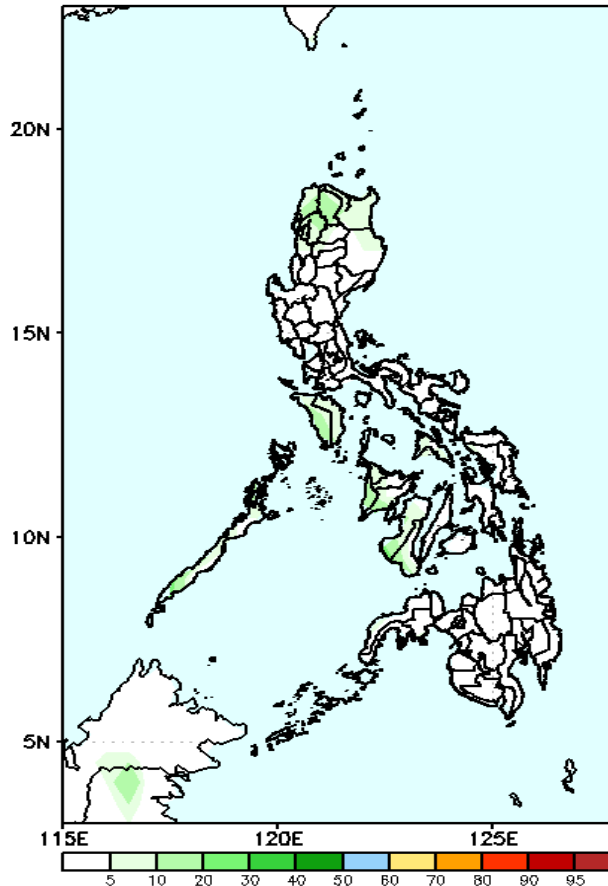
Week 1: Sep 21-27, 2022

GEFS Week-1 Exceedance Prob. > 100mm
Valid: 20220921 - 20220927



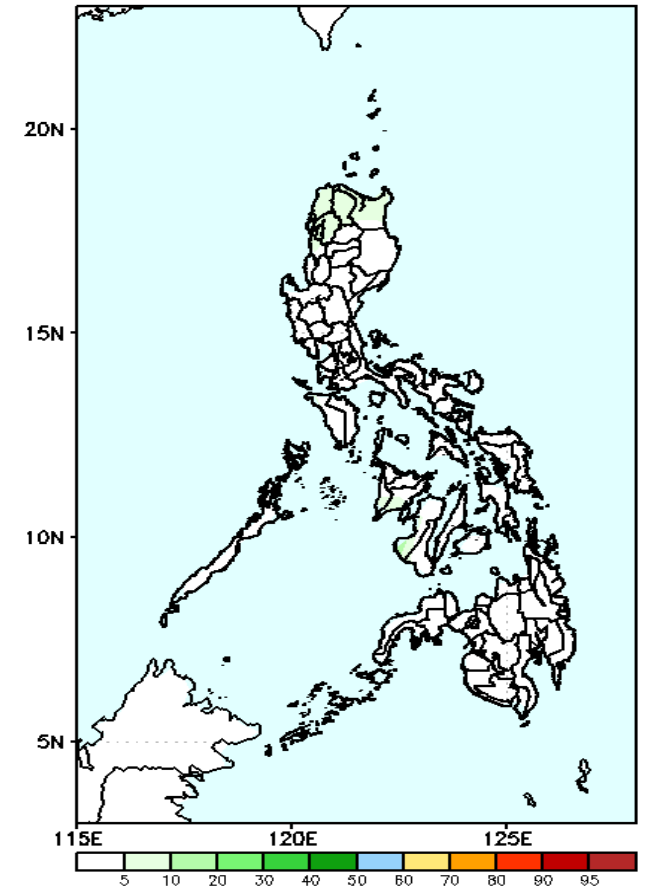
Low probability of rainfall to exceed 100mm in most parts of the country during the forecast period.

GEFS Week-1 Exceedance Prob. > 150mm
Valid: 20220921 - 20220927



Low probability of rainfall to exceed 150mm in most parts of the country during the forecast period.

GEFS Week-1 Exceedance Prob. > 200mm
Valid: 20220921 - 20220927

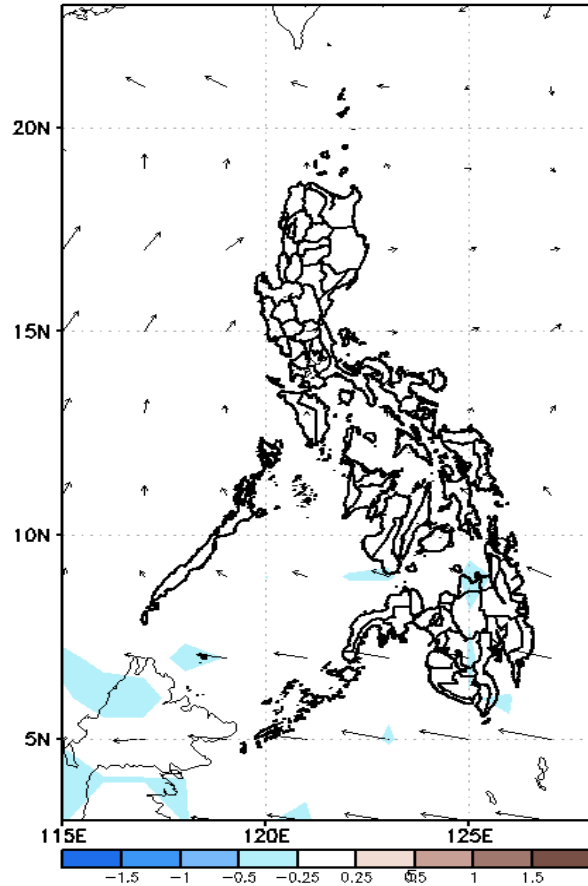


Low probability of rainfall to exceed 200mm in most parts of the country during the forecast period.

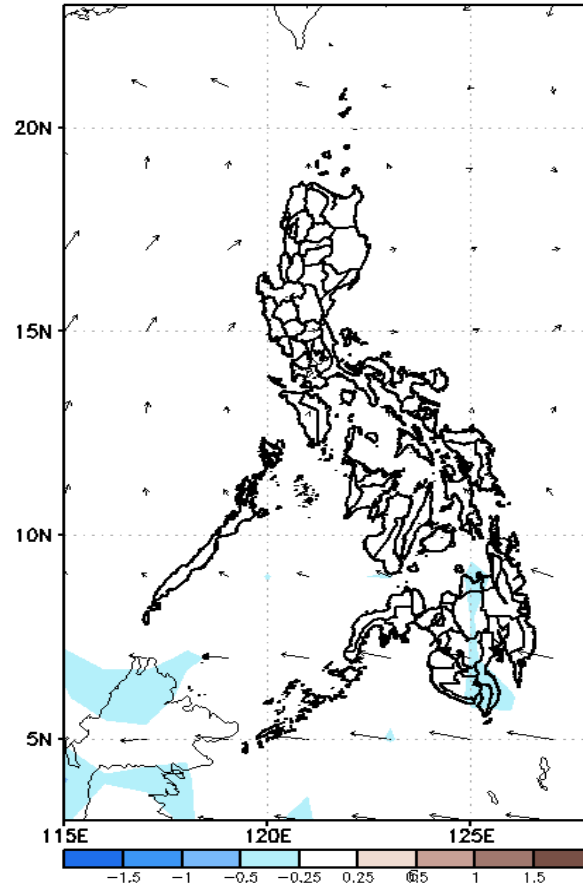
GEFS Week-2 Forecasts: Wind Anomaly Forecast

Week 2: Sep 28- Oct 04, 2022

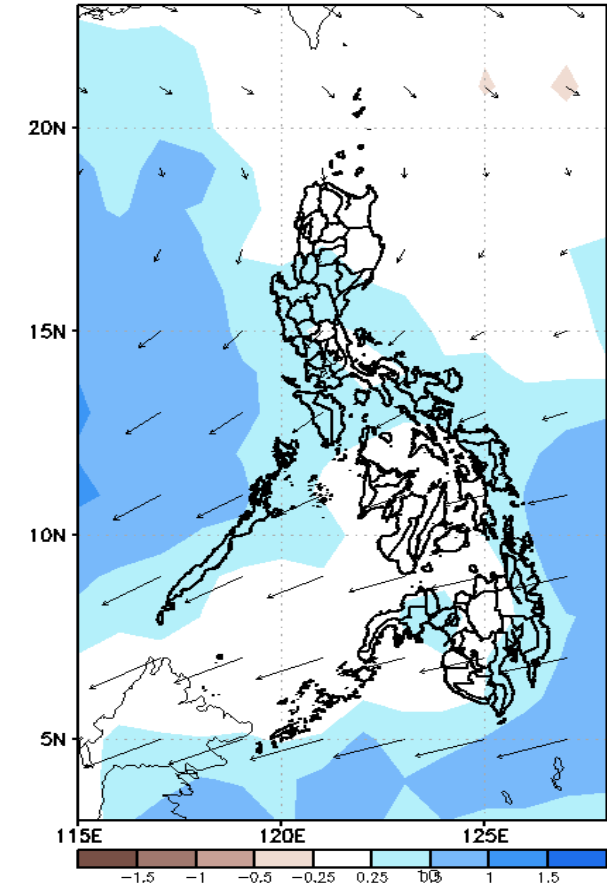
GEFS Week-2 850-hPa Divergence and Wind Anomaly
Valid: 20220928 - 20221004



GEFS Week-2 700-hPa Divergence and Wind Anomaly
Valid: 20220928 - 20221004



GEFS week-2 200-hPa Divergence and Wind Anomaly
Valid: 20220928 - 20221004

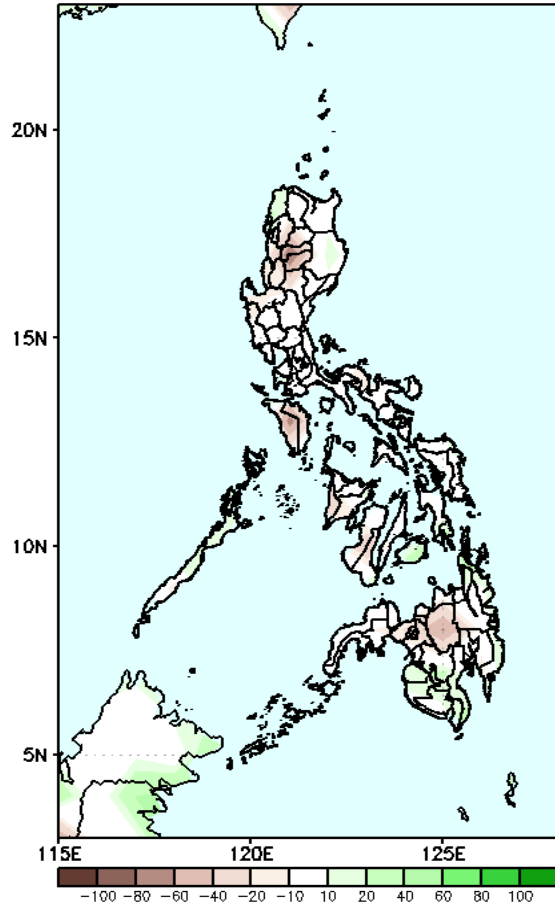


Southwest Monsoon affecting most parts of Northern Luzon while Easterlies affecting the rest of the country during the forecast period.

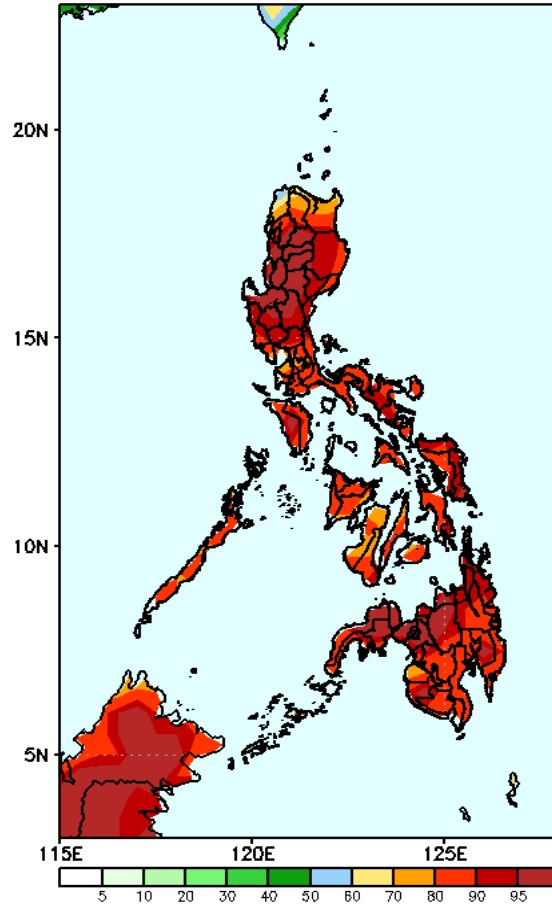
Precipitation Anomaly and Exceedance Probability > 25/50 mm

Week 2: Sep 28- Oct 04, 2022

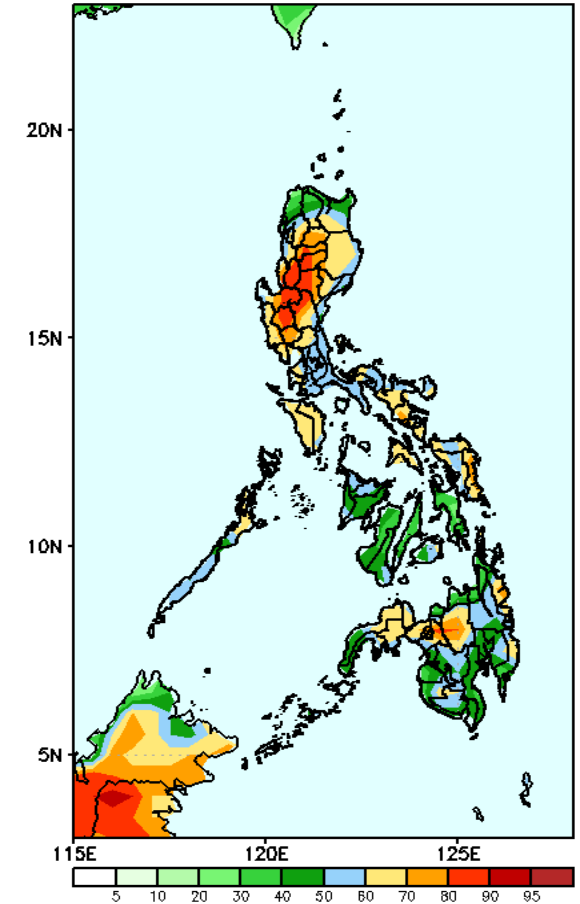
GEFS Week-2 Precip Anomaly
Valid: 20220928 - 20221004



GEFS Week-2 Exceedance Prob. > 25mm
Valid: 20220928 - 20221004



GEFS Week-2 Exceedance Prob. > 50mm
Valid: 20220928 - 20221004



Average to about 20mm rainfall deficit is expected in most parts of the country during the forecast period.

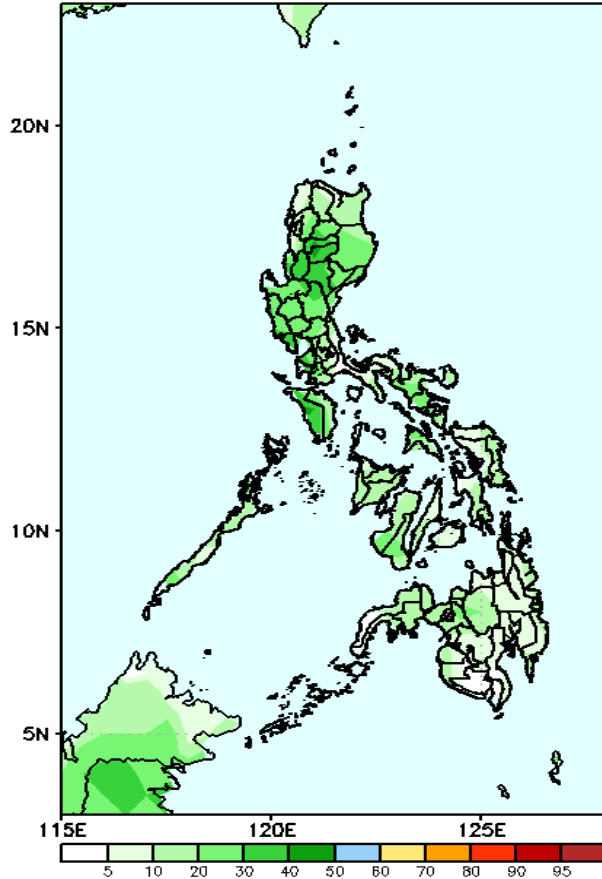
High probability of rainfall to exceed 25mm in most parts of the country during the forecast period.

High probability of rainfall to exceed 50mm in most parts of Luzon, Eastern Visayas, Bukidnon, Lanao del Sur, Lanao del Norte, and Zamboanga Peninsula while less likely for the rest of the country during the forecast period.

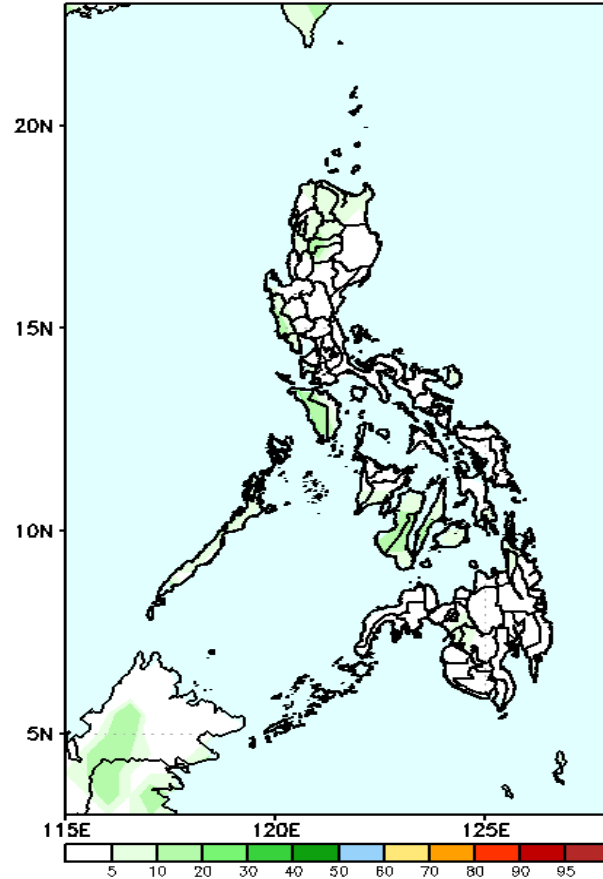
Exceedance Probability > 100/150/200 mm

Week 2: Sep 28- Oct 04, 2022

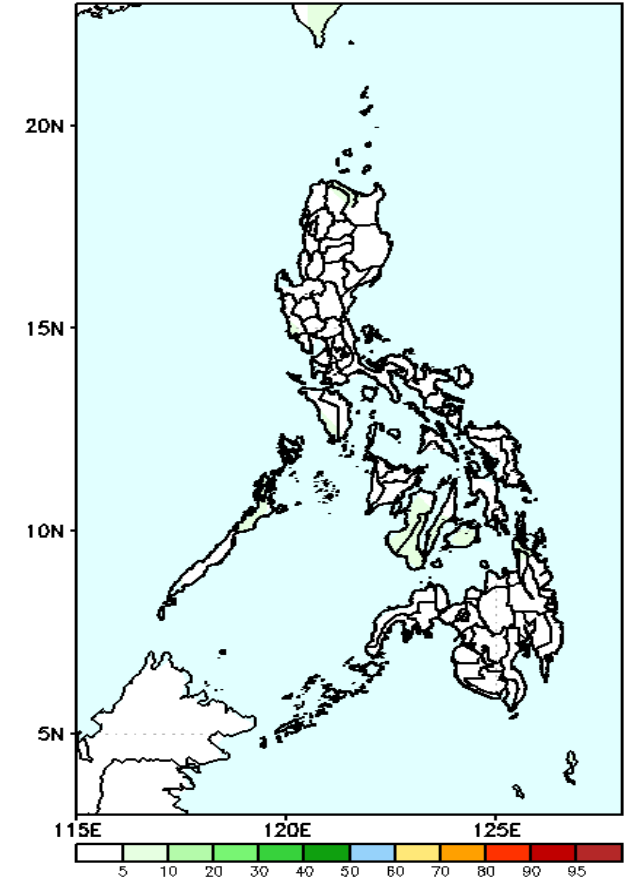
GEFS Week-2 Exceedance Prob. > 100mm
Valid: 20220928 - 20221004



GEFS Week-2 Exceedance Prob. > 150mm
Valid: 20220928 - 20221004



GEFS Week-2 Exceedance Prob. > 200mm
Valid: 20220928 - 20221004



Low probability of rainfall to exceed 100mm in most parts of the country during the forecast period.

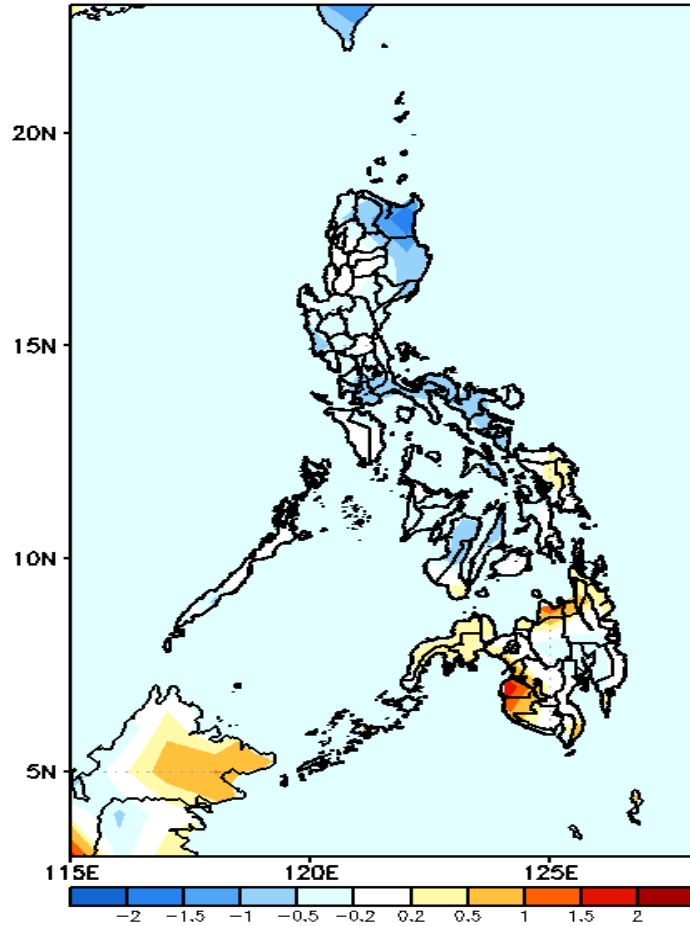
Low probability of rainfall to exceed 150mm in most parts of the country during the forecast period.

Low probability of rainfall to exceed 200mm in most parts of the country during the forecast period.



GEFS Week-1 & 2 Forecasts: T2m Anomaly

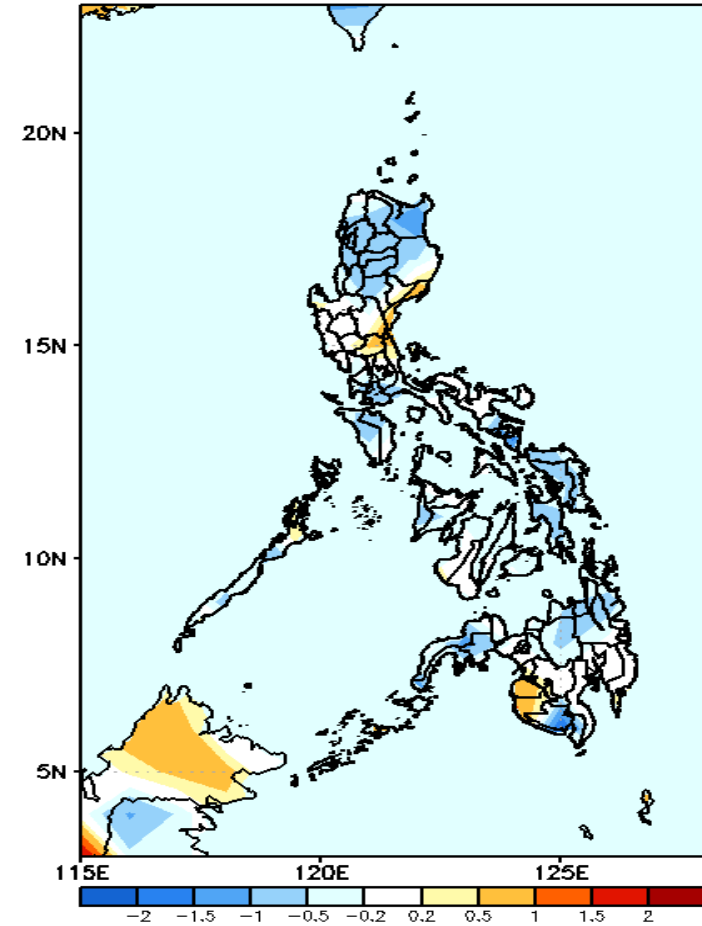
GEFS Week-1 T2m Anomaly
Valid: 20220921 - 20220927



2m Temperature Week 1: Sep 21-27, 2022

Slightly cooler to cooler than average surface air temperature will likely experience in most parts of the country except in Samar provinces and most parts of Mindanao where slightly warmer to warmer than average temperature is expected in Mindanao during the forecast period.

GEFS Week-2 T2m Anomaly
Valid: 20220928 - 20221004



2m Temperature Week 2: Sep 28- Oct 04, 2022

Slightly cooler to cooler than average surface air temperature will likely experience in most parts of the country except in Aurora, Bulacan, Antipolo, Maguindanao and Sultan Kudarat where slightly warmer to warmer than average temperature is expected in Mindanao during the forecast period.